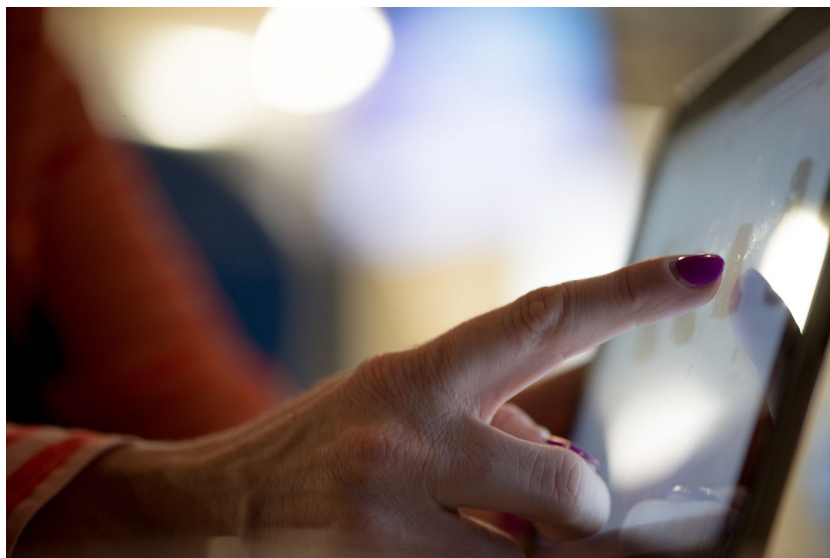


# DESIGN AND EVALUATION OF SUPPORT SYSTEMS FOR PEOPLE WITH DEMENTIA

**Lead Researcher:** Jazette Johnson



*Photo by Timothy Muza on Unsplash*

Jazette Johnson and researchers from the Informatics Department at the University of California, Irvine are recruiting participants for a research study about understanding the experiences of people with dementia and their caregivers in support groups and their use of technology. This study may help us to better understand how we can design online support groups to supplement interactions of in person support group.

You are eligible to participate in this study if you are at **least 18 years of age or older and are a person who has some form of dementia/MCI or a caregiver of someone with dementia.**

The study will take place via video call (e.g. Zoom) or telephone. Your participation will last up to 1 hour.

As part of participating, you will be asked to **answer questions about your experiences in support groups and your use of technology.**

**You will be paid \$30 for your participation in this research.**

If you participate, there is no anticipated direct benefit and minimal risk for participating in the study.

If you are interested in participating in this study, please contact Jazette Johnson at [jazettej@ics.uci.edu](mailto:jazettej@ics.uci.edu) or (562)315-8402.